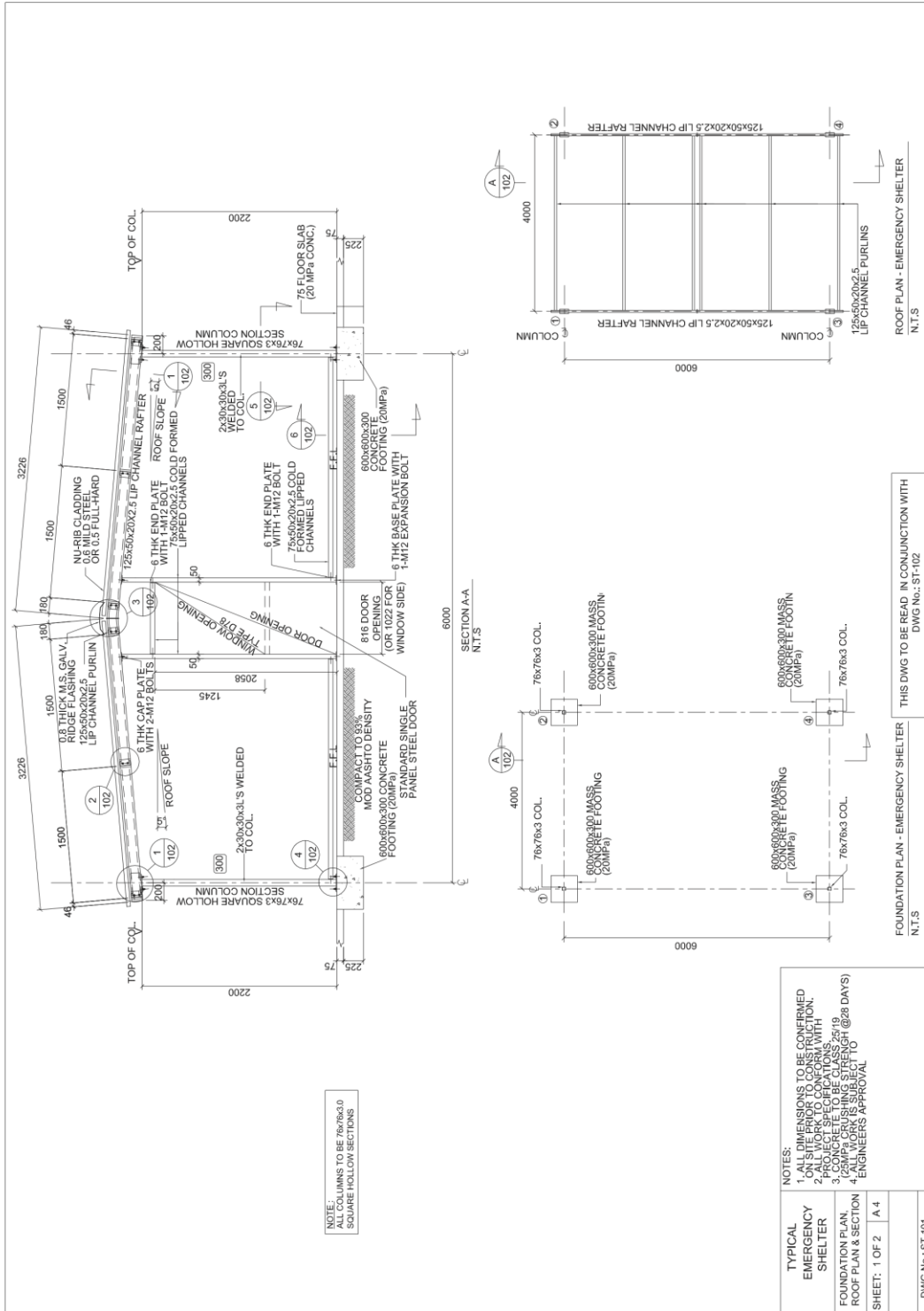
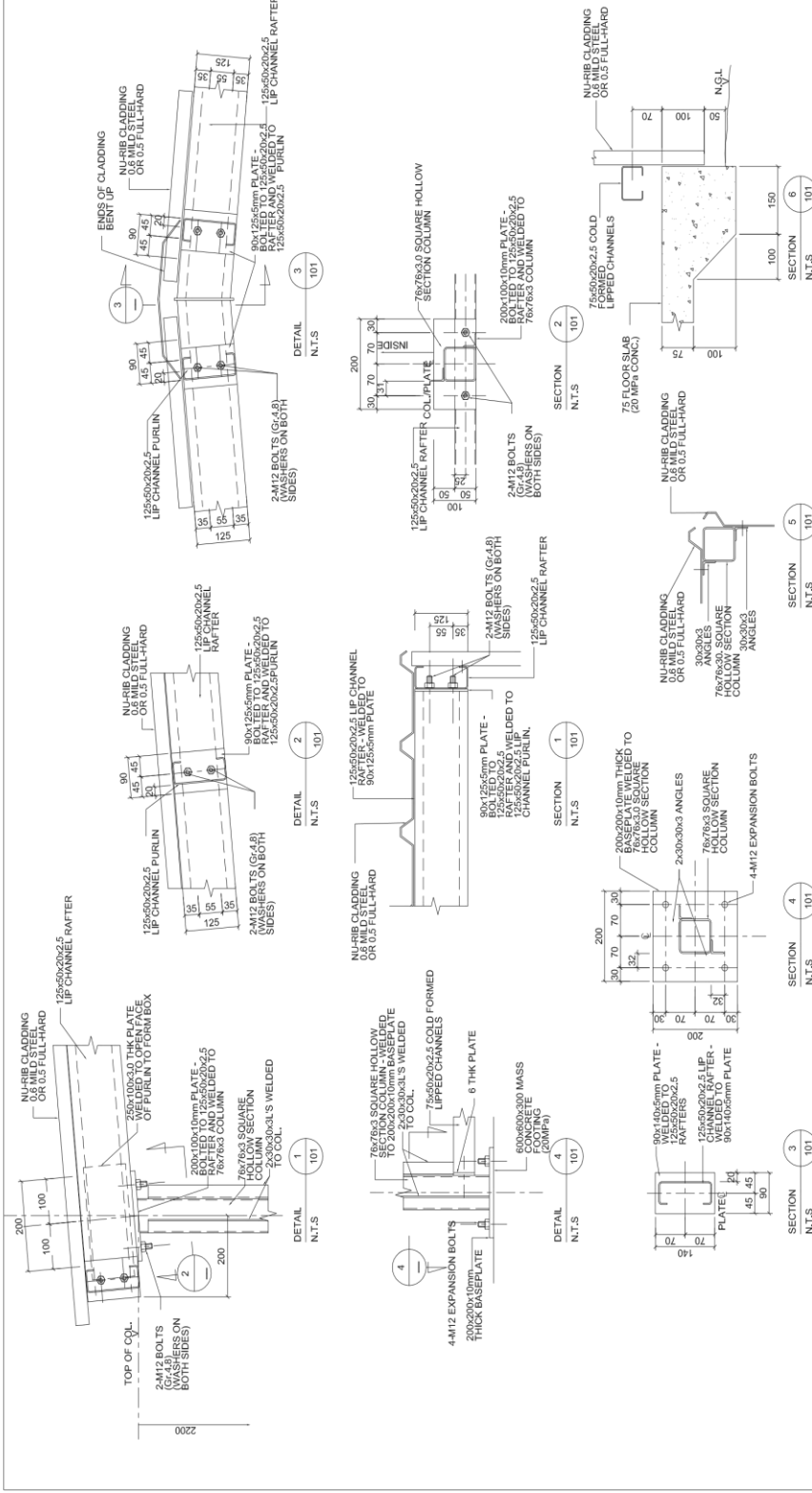


ANNEXURE B - SHELTER DRAWINGS

INCREMENTAL INTERVENTIONS: EMERGENCY HOUSING PROGRAMME | PART 3 (OF THE NATIONAL HOUSING CODE) | 2009





TYPICAL EMERGENCY SHELTER

NOTES:

1. ALL DIMENSIONS TO BE CONFIRMED.
2. ALL WORK TO CONFORM WITH PROJECT SPECIFICATIONS.
3. PROJECT SPECIFICATIONS: 25619
4. (SMP) CRUSHING STRENGTH @28 DAYS
5. ALL WORK SUBJECT TO ENGINEERS APPROVAL

SHEET: 2 OF 2 | A 4

DWG No.: ST-102

THIS DWG TO BE READ IN CONJUNCTION WITH
 DWG No.: ST-101